

# Virtualized Appliance Licensing Guide

Exinda ExOS Version 6.3

© 2012 Exinda Inc.



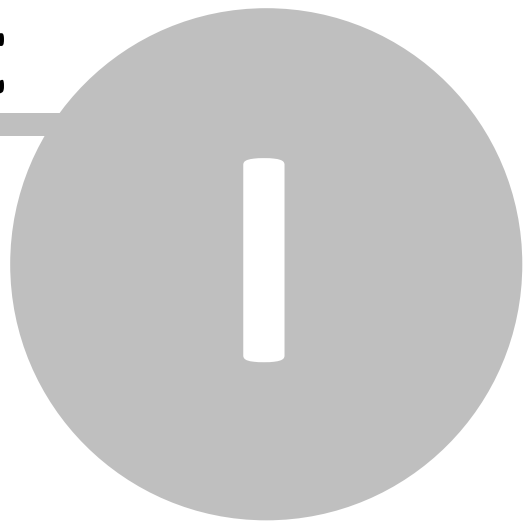
---

# Table of Contents

<b>Part I Introduction</b>	<b>6</b>
1 Using this Guide .....	6
2 Further Reading .....	7
<b>Part II Overview of the Exinda License     Process for Virtualization Appliance</b>	<b>10</b>
<b>Part III Download the Exinda Virtual     Solution</b>	<b>12</b>
<b>Part IV VMware License Process</b>	<b>14</b>
1 Generate your Trial License .....	16
2 Purchase a License .....	18
<b>Part V XenServer License Process</b>	<b>22</b>
1 Generate your Trial License .....	25
2 Purchase a License .....	27



**Part**



# 1 Introduction

## Virtualized Appliance Licensing Guide

Exinda Firmware Version: 6.3

All rights reserved. No parts of this work may be reproduced in any form or by any means - graphic, electronic, or mechanical, including photocopying, recording, taping, or information storage and retrieval systems - without the written permission of the publisher.

Products that are referred to in this document may be either trademarks and/or registered trademarks of the respective owners. The publisher and the author make no claim to these trademarks.

While every precaution has been taken in the preparation of this document, the publisher and the author assume no responsibility for errors or omissions, or for damages resulting from the use of information contained in this document or from the use of programs and source code that may accompany it. In no event shall the publisher and the author be liable for any loss of profit or any other commercial damage caused or alleged to have been caused directly or indirectly by this document.

## 1.1 Using this Guide

Throughout the manual the following text styles are used to highlight important points:

- Useful features, hints and important issues are called "notes" and they are identified in a light blue background.

**Note:** This is a note.

- Practical examples are presented throughout the manual for deeper understanding of specific concepts. These are called "examples" and are identified with a light green background.

This is an example.

- Warnings that can cause damage to the device are included when necessary. These are indicated by the word "caution" and are highlighted in yellow.

**Caution:** This is a caution.

## 1.2 Further Reading

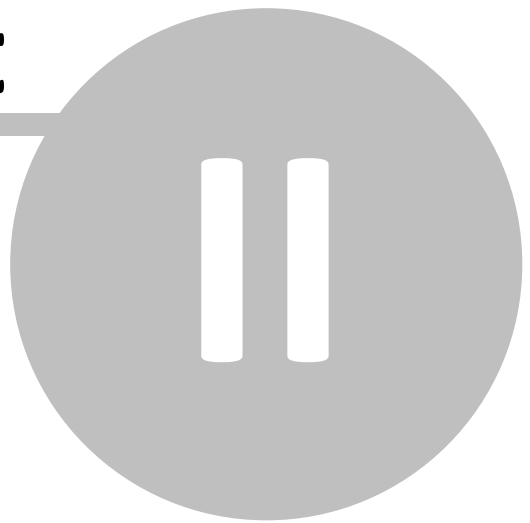
In addition to this guide, the following additional user documentation is available:

- Exinda Quick Start Guides
- Exinda User Manual
- Exinda Command Line Interface (CLI) Reference Guide
- Exinda "How To" Guides
- Exinda Licensing Guides

Please visit <http://www.exinda.com> for more information.



**Part**



## 2 Overview of the Exinda License Process for Virtualization Appliance

The Exinda virtual appliance license process is very simple. To trial the Exinda Virtual appliance, go to the Exinda website for the virtual appliance and select the 30 day free trial icon. You will be prompted for your contact information and hypervisor type.

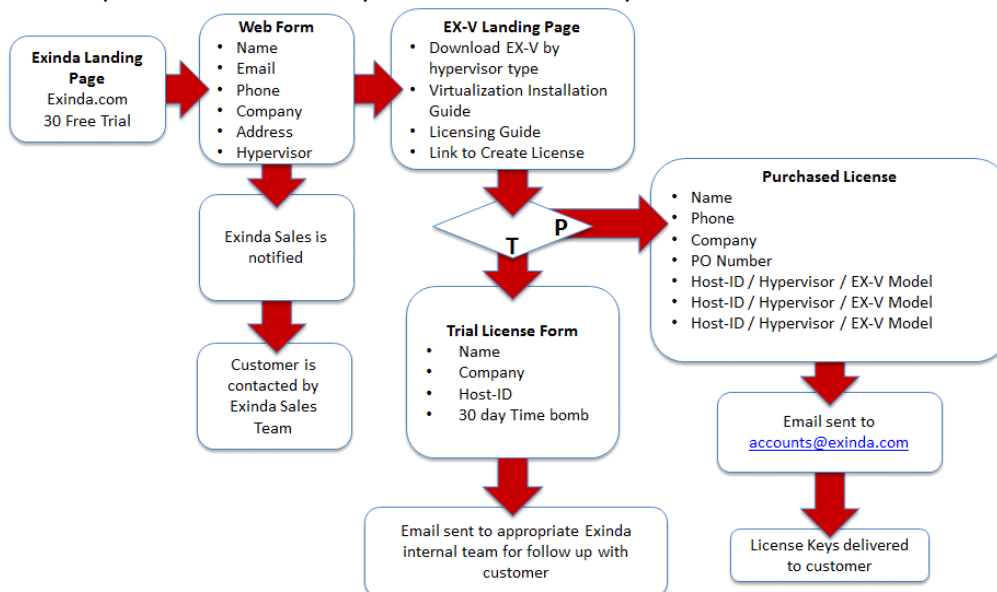
Two things will happen:

1. An email notification is sent to your local Exinda sales team for them to contact you;
2. A new landing page for the EX-V is presented to you with the option to download the virtual appliance, EX-V documentation, and the link to create a trial license.

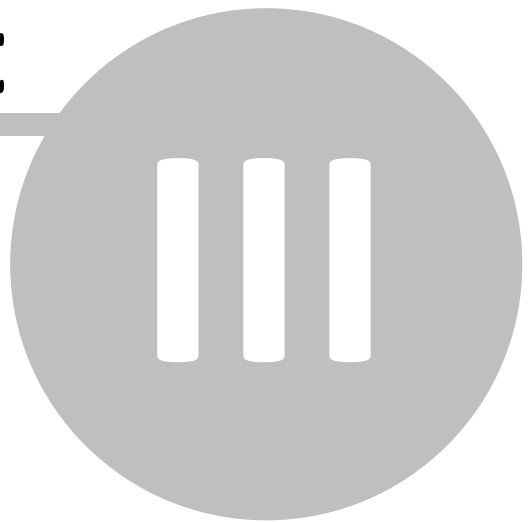
Equally, you have the option to purchase an Exinda license for your EX-V appliance. You are either presented with a new purchase license landing page or you can come back to the page after you have completed the evaluation. The purchased license web form prompts you for:

- your contact information,
- PO number,  
*Note: You must have already completed a Purchase Order to complete this form.*
- Host-ID,
- hypervisor type, and
- the license level you have purchased for each EX-V appliance.

Once you have completed the purchased license form, the Exinda accounting team is notified and the purchased license keys will be emailed to you.



**Part**



### 3 Download the Exinda Virtual Solution

Congratulations you have found the 30 Day trial license for the Exinda Virtual appliance. You should have landed on the page <http://exinda.force.com/virtual> that looks like the image below.



1. Click the **VA** icon to take you to the download page.
2. Complete the form on <http://blog.exinda.com/virtual-download/> and click **Submit**.
3. After you have entered in your information, download your image based on the hypervisor of choice and proceed with the trial licensing process. Follow the email, similar to the one below, that includes the three easy steps to exploring the Exinda virtual appliance.

Thank you for your interest in Exinda's virtual appliance.

To get started, follow these 3 easy steps:

#### STEP 1

Download the latest Exinda Virtual machine image based on your hypervisor.

[VMware ESX/ESXi Download](#)

[Citrix XenServer Download](#)

[Microsoft Hyper-V Download](#)

[Linux KVM \(kernel-based virtual machine\) - 32 bit image](#)

[Linux KVM \(kernel-based virtual machine\) - 64 bit image](#)

#### STEP 2

Read the [Quick Start License Guide](#) and create a HOSTID

#### STEP 3

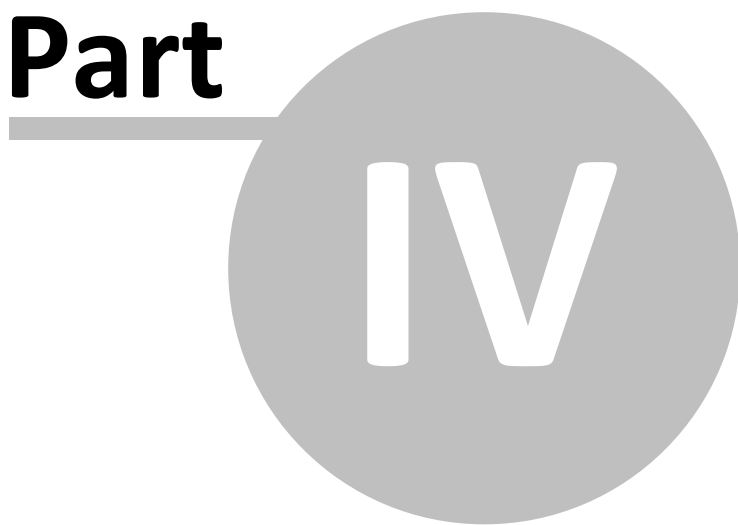
Place your HOSTID and email address in the [Exinda Trial License Generator](#) to create your 30 day license.

Thank you,

Branden Reid | Product Marketing  
Exinda



**Part**



**IV**

## 4 VMware License Process

In this step we walk you through installing on VMware ESXi version 4.1. The process is the same for VMware 5.0.

**Note:** You must download both the **VMware ESX/ESXi Download (exinda.ovf)** and the **VMware VMDK (Exinda-disk1.vmdk)** files from the [Exinda website](#).

1. In the vSphere Client, select **File > Deploy OVF Template**.
2. Enter in the location where you downloaded the Exinda OVF file to and press **Next**.



3. To accept the End User License Agreement, select **Accept** and click **Next**.
4. Enter a user-defined name unique to this virtual Exinda instance, then press **Next**.

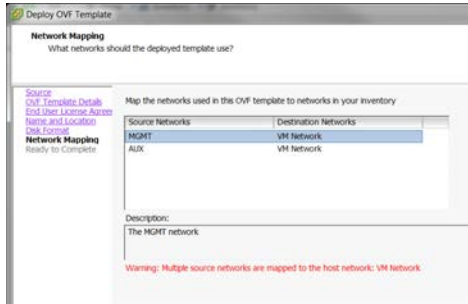


5. Select either **Thin Provisioning** or **Thick Provisioning**. Exinda recommends Thick Provisioning.  
Press **Next**.  
You will have the opportunity to change the disk storage for the EX-V image later.



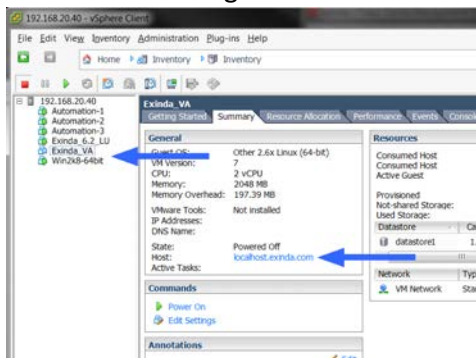
6. Maps the networks used in the OVF template to the networks in the ESXi inventory. Press **Next**.

You will have the option to change the network interfaces later.

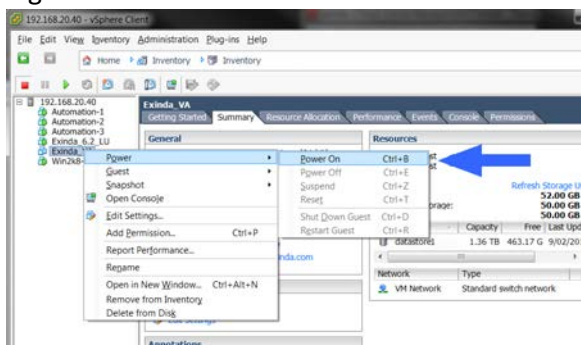


7. Review the selected options and press **Finish**. The deployment of the EX-V image starts. A progress bar is displayed, indicating the Exinda virtual machine has started building the deployment.

8. When the Exinda virtual machine as finished deployment, click Close and power on the Exinda virtual machine. The Exinda virtual machine is powered off by default. Power on the EX-V to find the Host-ID and the DHCP assigned IP address.

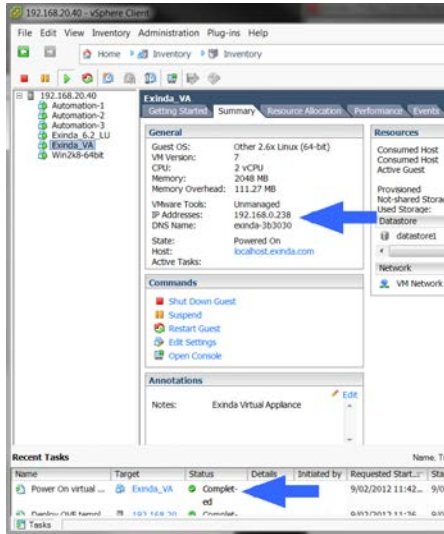


9. Right-click the EX-V and select **Power > Power On** the virtual appliance.



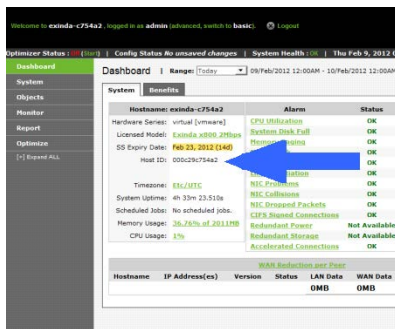
When the Exinda virtual machine has completed the Power-On process, it is assigned an IP Address via DHCP.

10. Open a browser and enter the IP address of the Exinda virtual appliance to find out the Host-ID information.



The default user name is **admin**, and the password is **exinda**.

11. Browse to the Dashboard Tab and find the Host-ID that the ESXi created for this virtual machine.



## 4.1 Generate your Trial License

In this step you will go to [https://license.exinda.com/virtual\\_trial/](https://license.exinda.com/virtual_trial/) URL to create your trial license. Your trial license will be emailed to you after you complete this step.

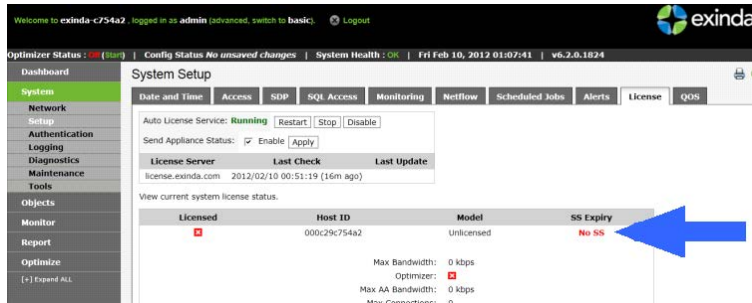
1. Enter in the Host-ID information, select from the pull down menu the License Type, enter your email address, and which Hypervisor Type you have installed the EX-V on. Once you have entered this information you will press the Create button to continue.



2. Once you have received your license key in your email, copy the license key into the Exinda GUI.

a. In a browser, navigate to the IP address assigned to your Exinda Virtual machine.

b. To view the status of your license, select **System > Setup > License**.  
The screen below indicates this system is not licensed.

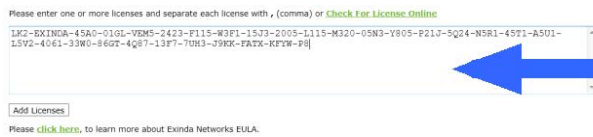


c. Scroll down the screen and copy the license key string.

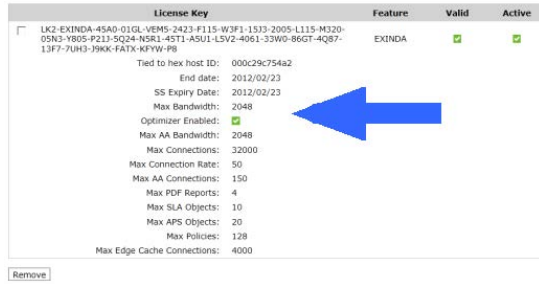
You may also select **Check for License Online** if your Host-ID has been previously entered into the system. Since this is probably the first time you are licensing your virtual machine, and your Host-ID was recently created, copy and paste your license key.

**You MUST be connected to the Exinda License Server at all times for the EX-V appliance to work.**

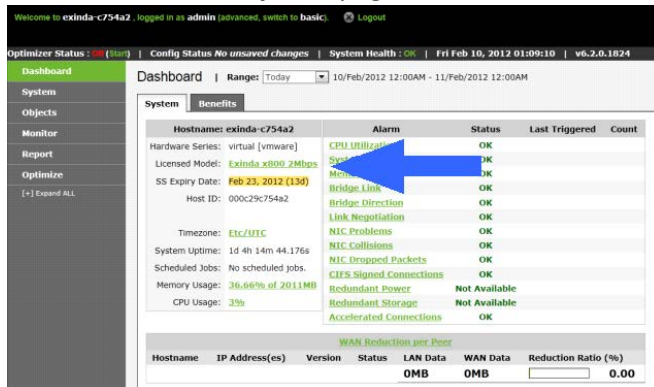
d. Click **Add License**.



3. After you have applied the License Key you can confirm your system has been licensed on the **System > Setup > License** page,



or the **Dashboard > System** page.



4. Save any changes, and reboot your system.

***Congratulations you have successfully licensed your Exinda virtual appliance. Accelerate away!***

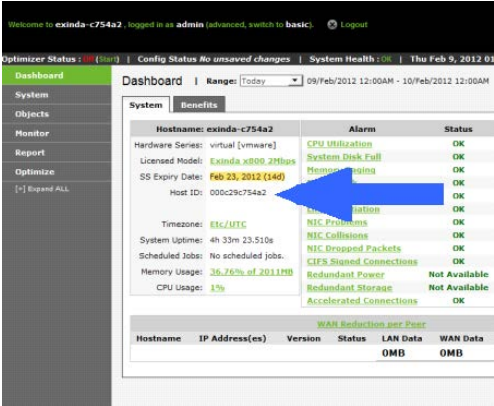
## 4.2 Purchase a License

In this step you will purchase a license from a web form. You must have your Host-ID information for each EX-V appliance and the PO number. As with the trial license process, you must have installed the EX-V and captured the Host-ID information to complete this process.

**Warning:** After the license has been installed on the virtual machine, you **MUST** check for updates to the Exinda software. To check for the latest update, in the Exinda Web UI go to **System > Maintenance > Firmware Update** and click **Check for Latest Update**. Install any updates available for the Exinda.

1. Open up a browser and enter [https://ip\\_address\\_of\\_your\\_Exinda\\_VM\\_here](https://ip_address_of_your_Exinda_VM_here)
2. Log into your Exinda VM. The default user name is **admin**, and the password is **exinda**.

3. On the **Dashboard > System** Tab, find the Host ID that the ESXi created for this virtual machine.



You must have your purchase order number that details the type of license and number of licenses you have purchased. You will need the following:

- Host ID
- Hypervisor Type = VMware
- License Level – this will be based on a bandwidth license  
You will need this information for each EX-V virtual appliance.

4. Navigate to the following link to purchase a license: [https://ec2-107-20-195-21.compute-1.amazonaws.com/virtual\\_purchase/](https://ec2-107-20-195-21.compute-1.amazonaws.com/virtual_purchase/).

5. Complete the Virtual Appliance Purchase form as required.

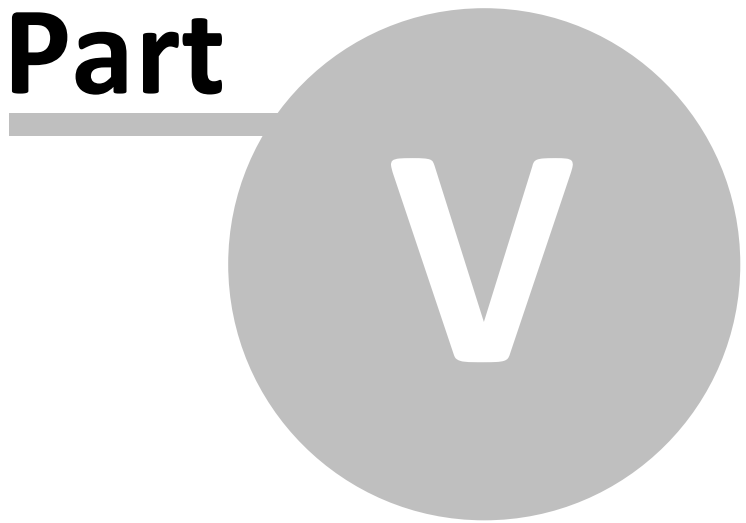
The screenshot shows the 'Virtual Appliance Purchase' form. It includes instructions on how to use the form and what information is required. The form fields are as follows:

- Name:
- E-Mail Address:
- Phone Number:
- Company:
- PO Number:
- Host ID:
- Hypervisor: VMware ESX/ESXi (dropdown menu)
- License: 2850-1M (dropdown menu)

Buttons at the bottom include 'Add New Row' and 'Send Purchase Information'.



**Part**



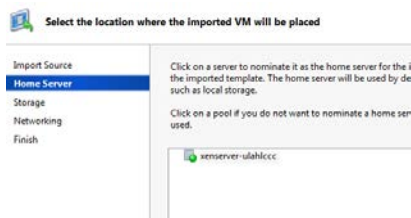
## 5 XenServer License Process

In this step we walk you through installing on Citrix XenServer 6.0. The process is the same for other versions of XenServer. You have to place the Exinda XVA file in a location accessible by the XenServer Host.

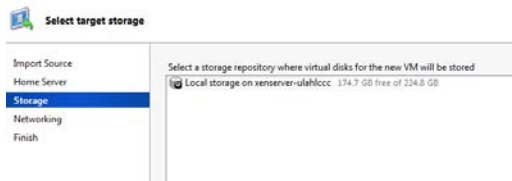
1. In the XenCenter console, select **File > Import**.
2. Browse for the location of the Exinda XVA, and enter into the dialog box. Click **Next**.



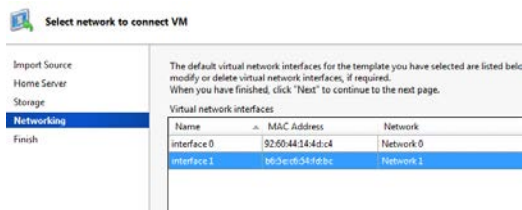
3. Select the host server for importing and installing the Exinda virtual appliance. Click **Next**.



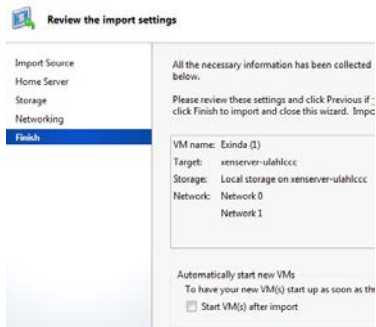
4. Select the **Target Storage** where the Exinda virtual appliance will be installed, and click **Import**.



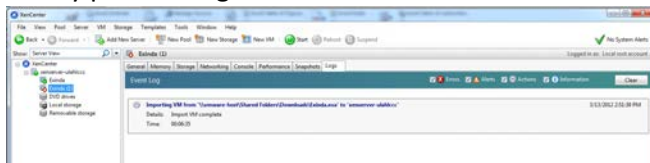
5. Select the network interfaces for the Exinda virtual appliance. Click **Next**. You will have the opportunity to change or add NIC interfaces to the Exinda virtual appliance later.



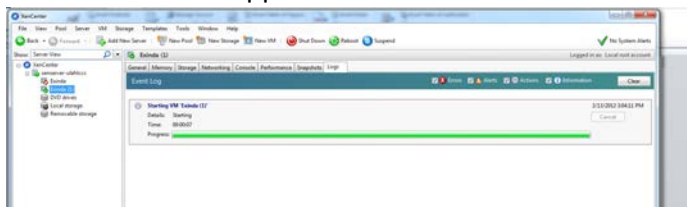
6. Verify the default configuration. It is recommended that you clear the Start VM checkbox after import. This will give you the option to edit settings for this virtual appliance before you power on. Click **Finish**.



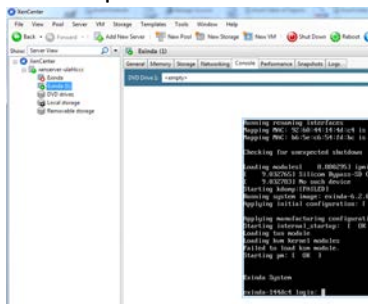
7. Confirm the import for the Exinda virtual machine is completed.
8. Select the Exinda virtual machine you are importing, and switch to the Log tab to see the progress and the completion notification. It is highly recommend that you import the virtual machine on a Gigabit network connection or local storage, as the import file is large in size and installation is affected by slowly performing networks.



9. Right-click the imported Exinda and select Start the Exinda virtual appliance. You will see the progress bar screen below in the Log tab indicating you have successfully started the virtual appliance.



10. On the XenCenter Console tab of the Exinda virtual machine, enter the credentials and the default parameters as part of the first time wizard setup. The default user name is *admin*, and the password is *exinda*.



11. Press **Enter** to read the EULA agreement. Press **Ctrl-C** to get to the EULA agreement question.

```
Starting kdump:[FAILED]
Running system image: exinda-6.2.0.1824 (x86_64) 2011/09/26
Applying initial configuration: [ 10.3910511 Bridge firewalling registered

Applying manufacturing configuration:
Starting internal_startup: [ OK ]
Loading tun module
Loading kum kernel modules
Failed to load ksm module.
Starting pm: [ OK ]

Exinda System

exinda-144dc4 login: root
Password:
Login incorrect

login: admin
Password:

Exinda System

Press ENTER to read the EULA
```

12. Press **Y** to accept the EULA agreement and press **Enter**.

```
www.exinda.com EXINDA NETWORKS PTY LTD
End User License Agreement (EULA)

NOTICE TO USERS: CAREFULLY READ THE FOLLOWING LEGAL AGREEMENT. USE OF THE SOFTWARE PROVIDED WITH THIS AGREEMENT ("SOFTWARE") CONSTITUTES YOUR ACCEPTANCE OF THESE TERMS. IF YOU DO NOT AGREE TO THE TERMS OF THIS AGREEMENT, PROMPTLY RETURN THE COMPLETE SOFTWARE PACKAGE (AND ANY OTHER DEVICES DELIVERED WITH THIS PACKAGE) TO THE DEALER FROM WHOM YOU OBTAINED THIS PRODUCT FOR A FULL REFUND. IF YOU HAVE ANY QUESTION CONCERNING THIS AGREEMENT CONTACT Exinda Networks, 13 Harper Street, Abbotsford, Victoria, 3067, Australia OR by email: legal@exinda.com.

1. LICENSE GRANT: The SOFTWARE is licensed, not sold. Upon the valid purchase of a license to the SOFTWARE and except as otherwise specified in an accompanying license summary, invoice or other documents evidencing the purchase of the software license, Exinda Networks Pty Ltd ("EXINDA"), grants you a non-exclusive, non-transferable license to use the SOFTWARE during the subscription period on servers connected to a maximum number of user computers not exceeding the number of user computers specified in the packaging accompanying the SOFTWARE or in any Supplemental Agreements. This license to use the SOFTWARE is conditioned upon your compliance with the terms of this Agreement. You agree you will only compile the SOFTWARE into any machine-readable or printed form as necessary to us

Do you accept the EULA (Y/N)? [N] Y
```

13. You will be prompted with a series of questions as part of the initial configuration Wizard. It is recommended you accept the defaults, as you have the option to configure the system later from the Exinda GUI. Press **Yes**.

```
Do you accept the EULA (Y/N)? [N] Y
Exinda Configuration Jump Start
Warning: Changes are applied immediately after pressing Enter at each question
Do you want to use the wizard for initial configuration? Y
```

Use the following defaults to complete the wizard configuration.

- Select **No** to disable IPv6.
- Select **Yes** to configure ETH0 for management access. This will disable the BR0 bridge.
- Select **Yes** to use DHCP on ETH0.
- Select **null** to default to the Exinda hostname.
- Select **null** for SMTP server address.
- Select **null** for email address for reports and alerts.

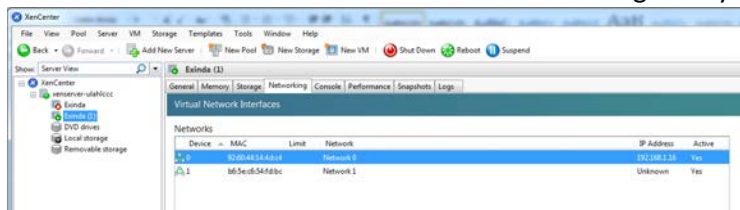
- g. Select **null** to use the default password which is “exinda”.
- h. Select **Yes** to change the interface speed.
- i. Select **AUTO** to configure the interface speed on ETH0 (assumes a gigabit NIC).  
You have successfully completed the wizard setup.

```

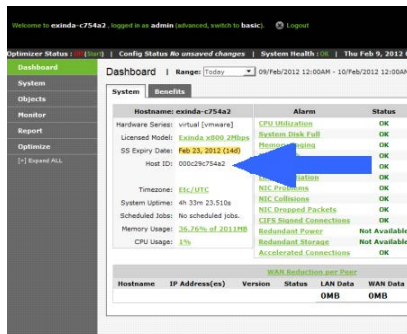
Step 1: Enable IPv6? [yes] n
Step 2: Use eth0 for management access. Note: This disables br0 (Y/N)? [Y] y
Step 3: Use DHCP on eth0 (Y/N)? [Y] y
Step 4: Hostname? [exinda-144dc4]
Step 5: SMTP server address? []
Step 6: An email address for reports and alerts?
Step 7: Admin password (Enter to leave unchanged)?
Step 8: Do you want to configure the interface speed and duplex settings? (Y/N)?
[N] y
Step 9: What is the speed of eth0 (auto)? [auto]
An internal error occurred; exiting.
To return to the wizard from the CLI, enter the "configuration jump-start"
command from configure mode. Launching CLI...
exinda-144dc4 >

```

14. Determine the IP address of your Exinda virtual appliance on the XenServer Network tab of the Exinda virtual machine and note IP address assigned by default to NIC 0.



15. Browse to the **Dashboard** tab and find the Host-ID that the XenServer host created for this virtual machine.



## 5.1 Generate your Trial License

In this step you will go to [https://license.exinda.com/virtual\\_trial/](https://license.exinda.com/virtual_trial/) URL to create your trial license. Your trial license will be emailed to you after you complete this step.

1. Enter in the Host-ID information, select from the pull down menu the License Type, enter your email address, and which Hypervisor Type you have installed the EX-V on. Once you have entered this information you will press the Create button to continue.

Virtual Appliance Trial License

Use this form to generate a 14 day trial license key for Exinda Virtual Appliances.

Step 1: Enter the Host ID and select the license type and duration.

Step 2: Enter a valid email address. Your trial license key will be emailed to this address.

This form cannot be used to extend an existing trial license. To do this, please contact support.

Host ID: 00029c754a2

License Type: 2000-1M

E-Mail Address: [input field]

Hypervisor Type: VMware ESX/ESXi

Create

2. Once you have received your license key in your email, copy the license key into the Exinda GUI.

a. In a browser, navigate to the IP address assigned to your Exinda Virtual machine.

b. To view the status of your license, select **System > Setup > License**.

The screen below indicates this system is not licensed.

Welcome to exinda-c754a2, logged in as admin (advanced, switch to basic). Logout

Optimizer Status: off (start) | Config Status: No unsaved changes | System Health: OK | Fri Feb 10, 2012 01:07:41 | v6-2.0.1824

System Setup

Date and Time: Access: SDP: SQL Access: Monitoring: Netflow: Scheduled Jobs: Alerts: License: QoS

Auto License Service: Running | Restart | Stop | Disable

Send Appliance Status:  Enable | Apply

License Server	Last Check	Last Update
license.exinda.com	2012/02/10 00:51:19 (16m ago)	

View current system license status.

Licensed	Host ID	Model	SS Expiry
<span style="color: red;">x</span>	00029c754a2	Unlicensed	No SS

Max Bandwidth: 0 kbps  
Optimizer:   
Max AA Bandwidth: 0 kbps

- c. Scroll down the screen and copy the license key string.

You may also select **Check for License Online** if your Host-ID has been previously entered into the system. Since this is probably the first time you are licensing your virtual machine, and your Host-ID was recently created, copy and paste your license key.

**You MUST be connected to the Exinda License Server at all times for the EX-V appliance to work.**

- d. Click **Add License**.

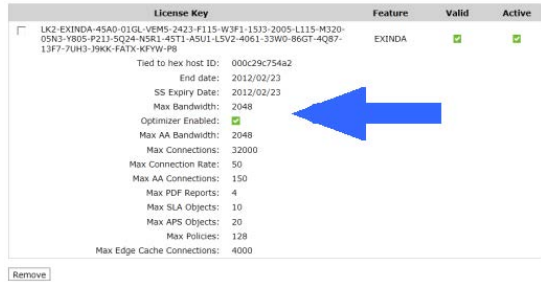
Please enter one or more licenses and separate each license with , (comma) or [Check For License Online](#)

IK2-EXINDA-4SA0-010L-VEM5-2423-F115-W3F1-1573-2005-1115-M320-05N3-Y805-P21J-SQ24-N5R1-45T1-ASU1-15V2-4061-33W0-86G7-Q287-13F7-70H3-39RX-FATX-RFYW-P8

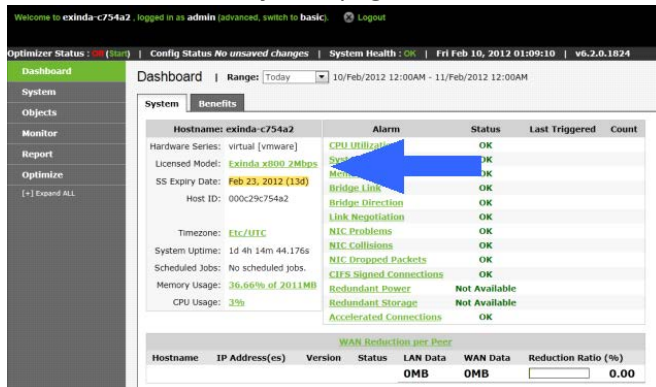
Add Licenses

Please [click here](#), to learn more about Exinda Networks EULA.

3. After you have applied the License Key you can confirm your system has been licensed on the **System > Setup > License** page,



or the **Dashboard > System** page.



4. Save any changes, and reboot your system.

***Congratulations you have successfully licensed your Exinda virtual appliance. Accelerate away!***

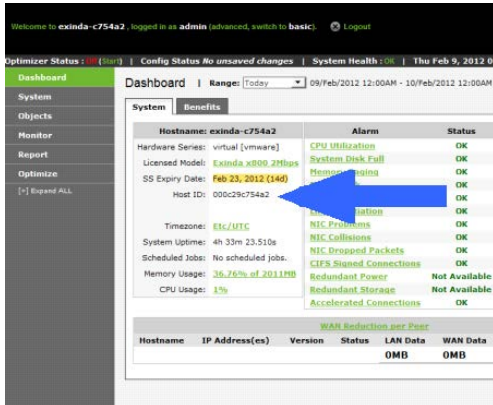
## 5.2 Purchase a License

In this step you will purchase a license from a web form. You must have your Host-ID information for each EX-V appliance and the PO number. As with the trial license process, you must have installed the EX-V and captured the Host-ID information to complete this process.

**Warning:** After the license has been installed on the virtual machine, you **MUST** check for updates to the Exinda software. To check for the latest update, in the Exinda Web UI go to **System > Maintenance > Firmware Update** and click **Check for Latest Update**. Install any updates available for the Exinda.

1. Open up a browser and enter [https://ip\\_address\\_of\\_your\\_Exinda\\_VM\\_here](https://ip_address_of_your_Exinda_VM_here)
2. Log into your Exinda VM. The default user name is **admin**, and the password is **exinda**.

3. On the **Dashboard > System** Tab, find the Host ID that the ESXi created for this virtual machine.



You must have your purchase order number that details the type of license and number of licenses you have purchased. You will need the following:

- Host ID
  - Hypervisor Type = VMware
  - License Level – this will be based on a bandwidth license  
You will need this information for each EX-V virtual appliance.
4. Navigate to the following link to purchase a license: [https://ec2-107-20-195-21.compute-1.amazonaws.com/virtual\\_purchase/](https://ec2-107-20-195-21.compute-1.amazonaws.com/virtual_purchase/).
5. Complete the Virtual Appliance Purchase form as required.

The screenshot shows the 'Virtual Appliance Purchase' form on the Exinda website. The form includes the following fields and instructions:

- Name:** [Text input field]
- E-Mail Address:** [Text input field]
- Phone Number:** [Text input field]
- Company:** [Text input field]
- PO Number:** [Text input field]
- Host ID:** [Text input field]
- Hypervisor:** [Dropdown menu, currently set to 'VMware ESX/ESXi']
- License:** [Dropdown menu, currently set to '2850-1M']

Buttons at the bottom of the form include 'Add New Row' and 'Send Purchase Information'. The form also contains instructions and a note about acquiring Host ID information.